



QUADURO
SYSTEMS



QUADPAD 2

MOBILITY MEETS DURABILITY

QUADURO

SIMPLICITY FOR PROFESSIONALS

Inspired by the industry moving Quadpad 1 tablet PC, the Quadpad 2 is a windows based 10.2" Intel Atom touchscreen tablet. Boasting an impressive and improved 1024 by 600 screen resolution over the original Quadpad, it contains all the features your company needs in order to meet your mobile computing requirements.

The Quadpad 2 is a sleek and simple device with a thin and light platform design. The 10.2" screen LCD display and power-efficient technologies enable long battery life, extending the productivity of the unit. The combination of such capabilities makes the Quadpad 2 an ideal cost effective tool for use within many vertical industries.

Enabled with features including LAN, WAN, Bluetooth technology and WIFI connectivity as standard, the Quadpad 2 tablet PC is designed to be quickly and seamlessly integrated within existing systems. The SD card reader, camera, and ultra quiet performance of the machine all combine to aid an efficient incorporation into a company's current projects.



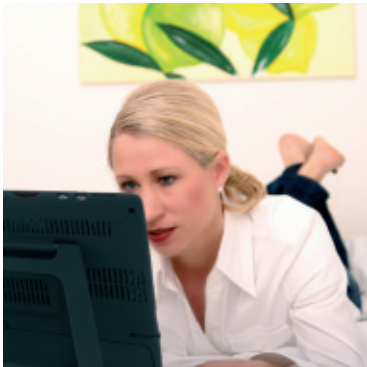


AUTOMOTIVE

- PC based diagnostics.
- MOT station tool employing its remote usability and wireless capabilities.
- Slate design ideal for the workshop environment.

EDUCATION

- New line Learning linked projects focusing on Tablet based education.
- E-learning and adult education tool as an interactive knowledge base.
- XP based machine, enabling use of all familiar software products and applications.
- Cost effective tool.



AV INTEGRATION/ AUTOMATION

- Control Panel for Audio Visual systems
- Control Systems in Luxury homes, hotels, office

WIDER INDUSTRY

- Versatile Mobile Presentation tool.
- Off-site and outdoor use in marketing, data collection and field studies.
- Class 1 & 2 EFB and GPS use in aviation
- Logistics and record keeping.



INPUT & OUTPUT

- 1: Built in speakers
- 2: Power button
- 3: VESA mountable
- 4: Kensington security lock
- 5: Battery pack
- 6: Ethernet port
- 7: Power plug
- 8: USB ports
- 9: Microphone jack
- 10: Audio jack
- 11: SD card reader
- 12: Pen slot
- 13: VGA cable port



OPTIONAL EXTRAS



RUBBER BUMP CASE

The extra support rubber bump case protects the Quadpad 2 from everyday knocks and bumps, and is ideal for use in garages and workshops and outdoor by surveyors and researchers.

12V/24V VEHICLE CHARGERS

Operate your Quadpad 2 and charge your battery while travelling. The Quadpad 2 car adapter plugs into a standard automobile cigarette lighter/power source. Built-in power level filtering and short circuit protection keep your tablet safe from power fluctuations and unexpected power surges. Colour: Black

AC POWER PACK

Avoid forgetting your AC power adapter, AC plug and power cord when travelling! A second AC power pack provides the convenience of working from multiple locations without the fuss of packing up the power sources for your Quadpad 2 PC. Colour : Black

STYLUS PEN

Larger diameter provides improved ergonomics and makes writing easier with less user fatigue providing an experience that is closer to a standard pencil.



PRODUCT SPECIFICATION

Product specification below is subject to change and only an indication of the standard system configuration. Please contact your Quaduro Systems dealer to obtain latest product information.

Processor	Intel Atom – 1.6Ghz
Memory	1GB DDR RAM upto 2GB RAM.
Hard Drive	80Gb 2.5" SATA hard drive – up to 160GB.
Display	10.2" 1024X600 WXGA LCD. 200 nits
Communication	Wireless 802.11 b/g (Mini PCIe) Qcom Bluetooth Integrated (Optional) LAN RJ45
Sound	Audio : High Definition Audio
Operating System	Windows XP Home Edition/Pro Windows Vista Home/Business
Expansion	I/O 3* USB Ports Card Reader SD/MMC card slot 1 Earphone Jack 1 Microphone Jack 1 Mini VGA output Port
Camera	1.3M Pixel CAMERA build-in
Battery	Re-chargeable Battery Pack (up to 4 hours)
Weight	1.15KG (with Battery)
AC Adapter Input :	Miniature Size Compact Adapter type (AC Plug) AC 100~240Volt / DC 12V 3A 40W
Output :	DC 16V, 3.13A
Dimensions	192 (L) x 252(W) x 28(H-min) 36(H-mx)
LED indicator	1 X Wireless activity 1 X Battery charge 1 X HDD Activity
Regulatory Approval (minimal)	EMC - CE/FCC/ BSMI/VCCI Safety - UL/TUV/CB/CCC RF - FCC ID,CE,TELEC,DGT,SRRC ESD - contact 4KV, air 8KV



QUADURO
SYSTEMS

WARRANTY/SUPPORT.

Quaduro Systems offer a 12-month warranty on all Quadpad products, which are designed with your convenience, timeliness, and business continuity in mind. In the unlikely event that you have a need for warranty repairs, a specially designed local support structure is set in place to ensure minimum downtime of your Quadpad tool.

ONLINE SUPPORT

Technical support is available electronically on Quaduro's website. Included are answers to many commonly asked technical questions plus most of easily downloadable software drivers.

QUADURO REPAIR CENTRE.

If your Quadpad Tablet PC requires warranty hardware repair, you may use the UK based Quaduro Repair centre option. Please call Quaduro Support or contact support via the Quaduro Website. The Global Support Center will assist you with troubleshooting over the phone. If it's confirmed that there is a hardware failure, you will receive a Case Number for tracking your unit through the repair process. Upon receipt of your portable computer at the Depot, specialist staff will make reasonable efforts to complete the repair and ship your repaired product back to you within three (3) business days.

GHz denotes microprocessor internal clock speed; other factors may affect application performance. CPU speed will be reduced under certain operating conditions. GB means one billion bytes when referring to hard drive capacity. Accessible capacity may vary. Wifi Requires 802.11b or 802.11g compatible access point. Some functionality may require Internet services which may require a fee. Viewable area of the screen is measured diagonally.

© 2009 Dins International Ltd & Quaduro Systems. Reproduction in whole or in parts without written permission is prohibited. All rights reserved. Dins International, Quaduro, Quadpad 2, Quadpad, and their respective logos are trademarks of Dins International Ltd. "Tools for Professionals" is a servicemark of Dins International Ltd. Microsoft, Windows are trademarks of Microsoft Corporation. All other trademarks are trademarks of their respective owners.

The Quaduro Systems brand is fully owned and managed by:



DINS
INTERNATIONAL

13 Argall Avenue
London
E10 7QE
United Kingdom

Tel: +44 (0)20 8988 9908
Fax: +44 (0)20 8988 9929
Email: enquiries@dinsinternational.com

Dealer:



FOR MORE INFORMATION PLEASE GO TO:

WWW.QUADURO.COM