



User Manual

Quadpad 1

TABLE OF CONTENTS

| | |
|---|-----------|
| COPYRIGHT | 6 |
| ABOUT THIS MANUAL | 6 |
| Conventions Used In This Manual | 6 |
| SOFTWARE LICENSES | 7 |
| General Guidelines | 7 |
| Power Cord Requirements..... | 8 |
| About the AC Adapter..... | 8 |
| Warning:..... | 8 |
| BATTERY (LITHIUM-ION) | 9 |
| FCC STATEMENT | 10 |
| FCC Caution: | 10 |
| BEFORE USING YOUR COMPUTER | 11 |
| Congratulations on your purchase of the product. | 11 |
| THE INSTRUCTIONS MANUAL | 12 |
| Product Features | 12 |
| ◇ Processor and OS (Operating System): | 12 |
| ◇ Multimedia LCD Display: | 12 |
| ◇ Complete Connectivity from Anywhere:..... | 12 |
| ◇ Integrated Ports and Adaptability:..... | 12 |
| INSTALLATION GUIDELINES | 13 |
| THE INSTRUCTIONS MANUAL | 13 |
| GETTING STARTED | 14 |
| The Instructions Manual | 14 |
| Unpacking the Product..... | 14 |
| Power Supply..... | 14 |
| Using the Battery | 14 |
| To install and remove the battery pack: | 14 |
| Installing the Battery: | 15 |
| Removing/Replacing the Battery: | 15 |

Caring for the Battery15

Using the AC Adapter15
 Caring for the AC Adapter16

The Back Stand16

The Stylus Pen16
 Performing Mouse Clicks and Other Procedures with the Stylus Pen17

SYSTEM OVERVIEW..... 18

Front View of the Computer19

1. 8.4 inch TFT SVGA LCD Display with Touch Screen Control Panel:19

2. Internal Microphone:.....19

Effortless input of monaural sound recording.19

FRONT PANEL BUTTON 20

USING THE A- MENU 21

Right Side View of the Computer22

Left Side View of the Computer23

Top View of the Computer24

Rear View and Built In Back Stand24

PROTECTING & MAINTAINING 25

CARING FOR YOUR COMPUTER 26

Routine Care26

Caring for the Battery.....26

Caring for the AC Adapter26

Caring for the Touch Screen Display.....27

THE SYSTEM BIOS UTILITY..... 28

AWARD BIOS28

BIOS Setup Utility28
 Initiating and Navigating the Setup Utility28

CONNECTING AN INFRARED DEVICE..... 28

| | |
|---|----|
| 1. Using the infrared port..... | 28 |
| 2. Printing to an infrared printer: | 28 |
| 3. Transferring files through an infrared connection: | 28 |

CONNECTING TO A LOCAL AREA NETWORK (LAN)..... 29

| | |
|--|----|
| Using the Modem..... | 29 |
| 1. Special restrictions in certain countries | 30 |
| 2. To change the modem setting: | 30 |
| Control Panel: | 30 |

ADJUSTING THE COMPUTER’S AND EXTERNAL DISPLAYS’ RESOLUTION..... 31

| | |
|---|----|
| Changing the Video Resolution of the Computer | 31 |
| Changing the Video Resolution of an External Display..... | 31 |

SPECIFICATIONS & SOFTWARE..... 32

| | |
|--|----|
| Specifications and Standard Features | 33 |
| Processor: | 33 |
| Operating System:..... | 33 |
| System BIOS: | 33 |
| Memory: | 33 |
| Display:..... | 33 |
| Graphics:..... | 33 |
| Pointing Device: | 33 |
| Storage: | 33 |
| Communication: | 33 |
| Wireless Connectivity: | 33 |
| CMOS Camera..... | 33 |
| GPS (optional) | 33 |
| Multimedia | 33 |
| Battery:..... | 33 |
| Power Supply:..... | 34 |
| Included Accessories: | 34 |
| System Recovery:..... | 34 |
| Interfaces:..... | 34 |
| Software Adobe Reader: | 34 |
| Mobility Weight: | 34 |
| Dimensions:..... | 34 |
| Warranty:..... | 34 |
| Environmental Specifications: | 34 |
| Certification of System: | 34 |

SOFTWARE 35

| | |
|--|----|
| Adobe Reader..... | 35 |
| Using the Bluetooth Utility: BlueSoleil TM | 35 |
| File Menu..... | 35 |

View Menu35

My Bluetooth Menu35

My Services Menu35

Tools Menu36

Help Menu36

ENABLE BLUETOOTH DEVICES..... 37

HOT KEYS APPLICATIONS..... 39

Using the Front Panel Hot Key Utility.....39

LAUNCH A PROGRAM VIA PRIMARY, SECONDARY AND THIRD PANELS..... 41

1. Primary Level Function41

2. Secondary Level Function42

3. Third Level Function.....43

Using Handwriting Recognition: Pensoft Pro.....44

KEYBOARD APPLICATIONS..... 45

TROUBLESHOOTING 46

Audio46

Bluetooth.....46

Ethernet Networking46

Hard Disk Drive47

Intermittent, Lock-ups or Hangs48

Modem48

Power.....49

 No power at all49

 System does not run on battery power49

 Power Management.....49

Projectors50

 The projector does not display an image.....50

 The projector image is cut off.....50

 The computer screen turns off.....50

 Resetting the projector50

USB.....51

Video Display52

 No video display on the LCD.....52

 Unsatisfactory video display on the LCD display52

 External monitors issues52

Viruses, Worms, and Spyware53

 Symptoms of infection53

WIRELESS NETWORKING54

Copyright

This publication, including all photographs, illustrations and software, is protected under international copyright laws, with all rights reserved. Neither this manual, nor any of the material contained herein, may be reproduced without the express written consent of the manufacturer.

Disclaimer: The manufacturer makes no representations or warranties with respect to the contents hereof and specifically disclaim any implied warranties of merchantability or fitness for any particular purpose. The manufacturer is not liable for technical and editorial error for this guide. The manufacturer reserves the right to revise or make changes to this publication without notice or obligation of the manufacturer to notify any person of such revision or changes.

About This Manual

This user's manual is provided to help you get the most from the computer. It covers all aspects of installation, configuration and operation.

Conventions Used In This Manual

The following typographical conventions are used throughout this manual:

- ◇ Bullets of this type provide information, but not procedural steps.
- Bullets of this type indicate a single procedural step.
- ✓ Bullets of this type indicate a single procedural step.
 1. Numbered lists represent procedures with sequential steps.
 - 1.** Bold faced numbered lists refer to a specific part or component in a diagram.
Italicized text indicates a particular button or tab to be selected.

Note: Warnings and cautionary statements contain important information that can protect you, your data and the computer. Always read warnings and cautionary statements carefully.

Software Licenses

The software included with the product and referenced in this document is furnished under a License Agreement. This Agreement specifies permitted and prohibited uses of this product.

General Guidelines

- ◇ Read all of the instructions carefully.
- ◇ Save the instructions for future use.
- ◇ To ensure correct and safe use, follow all warnings and instructions marked in the product documentation and within the computer.
- ◇ Except as explained elsewhere in this manual, do not attempt to service the computer yourself. Opening or removing covers might expose you to dangerous voltage points or other risks. Refer all servicing of marked components to qualified personnel.

Safety Notices

Please read these safety instructions carefully.

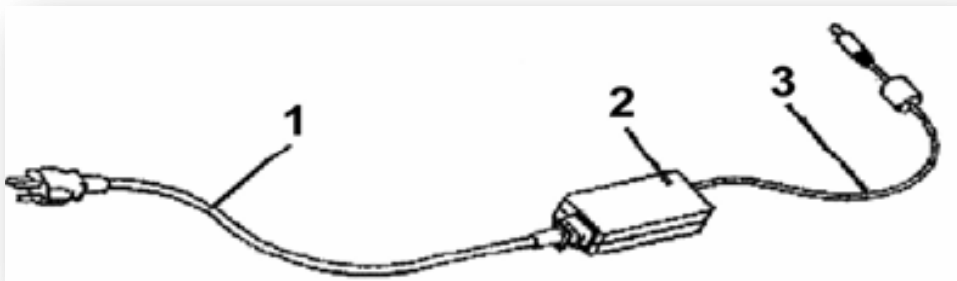
- ◇ All precautions and warnings on the equipment should be carefully noted.
- ◇ Please disconnect the computer from the AC outlet before cleaning.
- ◇ Never pour any liquids into any openings or directly onto the computer unit. This could result in fire or electrical shock.
- ◇ Ensure the voltage range of the power outlet is between 100V and 240V before connecting the computer unit. Exceeding the maximum rated voltage may cause damage to the AC adapter or to the computer. This could result in fire or electrical shock.
- ◇ Do not leave this equipment in a non-temperature controlled environment; storage temperatures below 4°C (39°F) or above 35°C (95°F) may damage the unit.

Power Cord Requirements

The power cord you received with this computer conforms to local specifications for use in the country where you purchased it. Power cord use in other countries may require an additional adapter and/or separate power cord. For additional information on local power requirements, contact an authorized dealer, reseller, or service provider.

About the AC Adapter

The AC adapter will automatically recognize any compatible power supply connected to the computer. The AC adapter can also be used to recharge the battery, which begins immediately after the AC Adapter cord is connected. A green LED will light to confirm charging is in progress. The ideal range for safe operation of the computer is from 100 ~ 240V AC.



1. AC Power Cord / 2. AC Adapter / 3. DC (Direct Current) Cord

Warning:

- ◇ Using the AC adapter to power other devices can damage the adapter or the device. This AC adapter is only designed for use with the product.
- ◇ Be sure to only use the AC adapter that comes provided with this product or a compatible option from the manufacturer. Other adapters may cause damage to the computer and will not be covered under the warranty.
- ◇ Grasp the adapter plug and not the cord, when unplugging the adapter from an electrical outlet.
- ◇ If the power cord becomes damaged (exposed or frayed, etc.), replace with a new AC adapter. Using a damaged cord may cause an electrical shock and may result in fire.
- ◇ Power off and unplug the AC adapter from the computer before unplugging it from the electrical outlet.

Battery (Lithium-Ion)

NOTE: Refer to following hazard statement within the service and operating documentation or on the adjacent label to the battery.

- 1. English:** CAUTION: DANGER OF EXPLOSION IF BATTERY IS INCORRECTLY INSTALLED. REPLACE ONLY WITH SAME OR EQUIVALENT TYPE RECOMMENDED BY THE MANUFACTURER. DISCARD OF USED BATTERIES IN ACCORDANCE WITH THE MANUFACTURER'S INSTRUCTIONS.
- 2. French:** IL Y A DANGER D'EXPLOSION S'IL Y A REMPLACEMENT INCORRECT DE LA BATTERIE. REMPLACER UNIQUEMENT AVEC UNE BATTERIE DU MÊME TYPE OU D'UN TYPE RECOMMANDÉ PAR LE CONSTRUCTEUR. METTER AU RÉBUT LES BATTERIES USAGÉES CONFORMÉMENT AUX INSTRUCTIONS DU FABRICANT.
- 3. German:** VORSICHT ! Explisionsgefahr bei unsachgemäßen Austausch der Batterie. Ersatz nur durch denselben oder einem vom Hersteller empfohlenem ähnlichen Typ. Entsorgung gebrauchter Batterien nach Angaben des Herstellers.
- 4. Swedish:** Explosionsfara vid felaktigt batteribyte. Använd samma batterityp eller en ekvivalent typ som rekommenderas av apparattillverkaren. Kassera använt batteri enligt fabrikantens instruktion.
- 5. Danish:** Lithiumbatteri- Eksplosionsfare ved fejlagtig håndtering. Udskiftning må kum ske med batteri af samme fabrikat og type. Lever det brugte batteri tilbage til leverandoren.
- 6. Norwegian:** Eksplosjonsfare ved feilaktig skifte av batteri. Benytt samme batteritype eller en tilsvarende type anbefalt av apparatfabriknten. Brukte batterier kasseres I henhold til fabrikantens instruksjoner.
- 7. Finnish:** Paristo voi räjähtää, jos se on virheellisesti asennettu. Vaihda paristo ainostaan laitevalmistajan suositteluun tyypin. Hävitä käyteen paristo valmistajan ohjeiden mukaisesti.

FCC Statement

This equipment has been tested and found to comply with the limits for a Class B digital device, pursuant to part 15 of the FCC Rules. These limits are designed to provide reasonable protection against harmful interference in a residential installation. This equipment generates, uses, and can radiate radio frequency energy, and if not installed and used in accordance with the instructions, may cause harmful interference to radio communications.

However, there is no guarantee that interference will not occur in a particular installation. If this equipment does cause harmful interference to radio or television reception, which can be determined by turning the equipment off and on, the user is encouraged to try to correct the interference by one or more of the following measures:

- ◇ Reorient or relocate the receiving antenna.
- ◇ Increase the separation between the equipment and receiver.
- ◇ Connect the equipment into an outlet on a circuit different from that to which the receiver is connected.
- ◇ Consult the dealer or an experienced radio/TV technician for help. Use of shielded cord is required to comply with Class B limits in Subpart B of Part 15 of the FCC rules.
- ◇ Do not make any changes or modifications to the equipment unless otherwise specified in the manual. If such changes or modifications should be made, you could be required to stop operation of the equipment.

FCC Caution:

1. The device complies with Part 15 of the FCC rules. Operation is subject to the following two conditions :
 - ◇ This device may not cause harmful interference.
 - ◇ This device must accept any interference received, including interference that may cause undesired operation.
2. This Transmitter must not be co-located or operating in conjunction with any other antenna or transmitter.
3. FCC RF Radiation Exposure Statement: This device has been tested for compliance with FCC RF Exposure (SAR) limits. The equipment complies with FCC RF radiation exposure limits set forth for an uncontrolled environment.
4. Changes or modifications to this unit not expressly approved by the party responsible for compliance could void the user authority to operate the equipment.

Before using Your Computer

Congratulations on your purchase of the product.

You will soon be in command of the worlds most lightweight, efficient and secure solution for managing all of your technology and mission critical data. Scale the computer and streamline the costs of day to day business operations and multimedia demands. Discover the computer's unparalleled in-the-field versatility for efficiently and reliably coordinating a myriad of tasks without costing a fortune.

Chapter Preview:

- ◇ Product Features
- ◇ Installation Guidelines



The Instructions Manual

Product Features

The product is a portable multimedia device empowering highly mobile users with wireless computing capabilities for day to day business and wireless applications. Its light weight and supreme portability combined with state-of-the-art multimedia capabilities provide exceptional writing, manoeuvring, and on-your-feet computing.

The product's primary features include:

- ◇ **Processor and OS (Operating System):** VIA C7-M Processor (1/1.2-GHz Ultra Low Power Consumption, Low Heat and Ultra Low Noise) and Microsoft® Windows® XP OS, a stable platform, providing exceptional performance for highly mobile users under extreme and variable conditions.
- ◇ **Multimedia LCD Display:** 8.4-inch TFT SVGA (800x600 / 262k colours / RGB 16 bit) LCD with Touch Screen Control Panel and Smart Panel Application enhancing user's ability to view data outdoors and under moving conditions.
- ◇ **Complete Connectivity from Anywhere:** The computer's built in Bluetooth® Class 2 Full Module and IEEE 802.11g OFDM WLAN offers the mobile user the maximum opportunities to stay connected from anywhere, ensuring uninterrupted data sharing and synchronization. Limitless instant accesses to business critical information.
- ◇ **Integrated Ports and Adaptability:** Multiple I/O ports (3 x USB 2.0, integrated fax/modem and Ethernet, FIR IrDA, external VGA port, PCMCIA) provide optimum versatility for any user's needs. Its ultra light weight and integrated wireless capability enable an effective mobile office. Multiple carrying options provide quick on-the-fly versatility while executing daily tasks comfortably and efficiently.

Note: Read the following Instructions Manual carefully before unpacking and setting it up. Refer to the Instructions Manual if you encounter any problems. Keep this Instructions Manual on hand for your reference.

Installation Guidelines

Read the following before assembling or disassembling the computer:

1. Follow all warnings and instructions marked on the product and within the Manual.
2. Before you begin cleaning the computer, make sure that you have unplugged all power cords and the device is Powered Off. Use a damp cloth for cleaning. Do not use liquids of any kind or aerosol cleaners.
3. Never place the computer on an unstable surface; it may fall, causing serious damage to it.
4. Avoid using a telephone (other than a cordless type) with the computer during an electrical storm. There may be remote risk of electric shock from lightning.
5. To ensure optimum performance and to protect the computer from overheating, ventilation slots must not be covered or obstructed in any way. The computer should never be placed near a radiator, heat register or in a built-in cabinet unless adequate ventilation is provided.
6. The computer should only be operated using the specified power indicated on the Warning Label located on the battery. If you are unsure of the type of power available to your locale, consult a dealer or the local power company.
7. If using an extension cord with the computer, make sure that the total ampere rating of the equipment plugged into the extension cord does not exceed the extension cord ampere rating. Also note that the total rating of all the devices plugged into the circuit does not exceed the fuse rating.
8. Never force objects of any kind into the computer's ventilation or housing slots as they may contact dangerous voltage points or spark resulting in electrical shock or a fire. Keep all liquids of any kind away from the computer.
9. Always disconnect all telephone lines & all power cords from the wall outlet before servicing or disassembling this product. Refer to the dealer or a qualified technician under the following conditions:

The Instructions Manual

- ◇ When the power cord or plug is damaged or frayed.
- ◇ If liquid has been spilled into the product.
- ◇ If the computer has been exposed to rain or water.
- ◇ If the computer does not operate normally when the operating instructions are followed. Adjust only those controls that are specified in the Operating Instructions or improper adjustment may require calibration again from a qualified technician.
- ◇ If the computer has been dropped or the housing has been damaged.
- ◇ If the computer experiences a distinct change in performance, indicating a need for service.

Getting Started

The Instructions Manual

Unpacking the Product

Before unpacking the product, prepare a suitable workspace for your computer. Make sure the workspace is level, stable and near an electrical outlet.

1. Open the box and remove the contents preserving the integrity of the box as you may need it and all of the packing materials for future shipping.
2. Inspect the contents for damage. If you find any irregularities or anything appears to be missing, contact your Dealer immediately.

Check that the following components are included in the box:

- ◇ Packing list
- ◇ Power Supply
- ◇ Using the Batter
- ◇ Using the AC Adapter
- ◇ The Back Stand
- ◇ The Stylus Pen

Power Supply

The computer can be powered using either the built in battery or the AC Power Adapter plugged into any grounded AC power outlet.

Using the Battery

The primary source of power for the computer is a Lithium-Ion battery pack. The battery pack will first need to be installed on the underside of the computer. After following the battery installation instructions below, plug the AC adapter into any electrical outlet and the computer will begin recharging immediately. In the future, you should not have to access the battery pack unless you wish to replace it with a fresh one.

Note:

1. The Battery LED lights green when charging and will turn off when the battery is fully charged.
2. When charging the first time, it is recommended that the battery be allowed to charge for no less than eight hours.
3. It will take a longer time to complete the charging process, if the user is using the computer at the same time.

To install and remove the battery pack:

1. Power down the computer using the Power Switch.

Installing the Battery:

2. Correctly align the battery and the notches in the battery bay. Firmly push the battery toward the computer until it clicks securely into place.

3. Turn the computer on using the power switch or begin recharging using the AC Adapter cord.

Removing/Replacing the Battery:

- ◇ Push the slide while gently pushing the battery away from the battery bay. The battery will release from the computer and allow you to remove it
- ◇ Carefully lift the battery out.

Caring for the Battery

- ◇ Do not heat, tamper or place the battery in water or near a fire.
- ◇ Do not subject the battery to unusual forces such as hitting it, stepping on it or dropping it.
- ◇ Do not attempt to open or service the battery pack.
- ◇ Only replace the battery with the same model or one of compatible design.

Using the AC Adapter

When connecting the computer to external power:

1. Plug the DC power cord into the DC jack on the computer.
2. Plug the 3-prong AC power adapter cord into a grounded electrical outlet.

Use the AC adapter to power the computer or recharge the battery when it is low.

Caring for the AC Adapter

- ◇ Be sure to only use the AC adapter that comes provided with this product or a compatible option from the manufacturer. Other adapters may cause damage to the computer and will not be covered under the warranty.
- ◇ Grasp the adapter plug and not the cord, when unplugging the adapter from an electrical outlet.
- ◇ If the power cord becomes damaged (exposed or frayed, etc.), replace with a new AC adapter. Using a damaged cord may cause an electrical shock and may result in fire.
- ◇ Power off and unplug the AC adapter from the computer before unplugging it from the electrical outlet.

The Back Stand

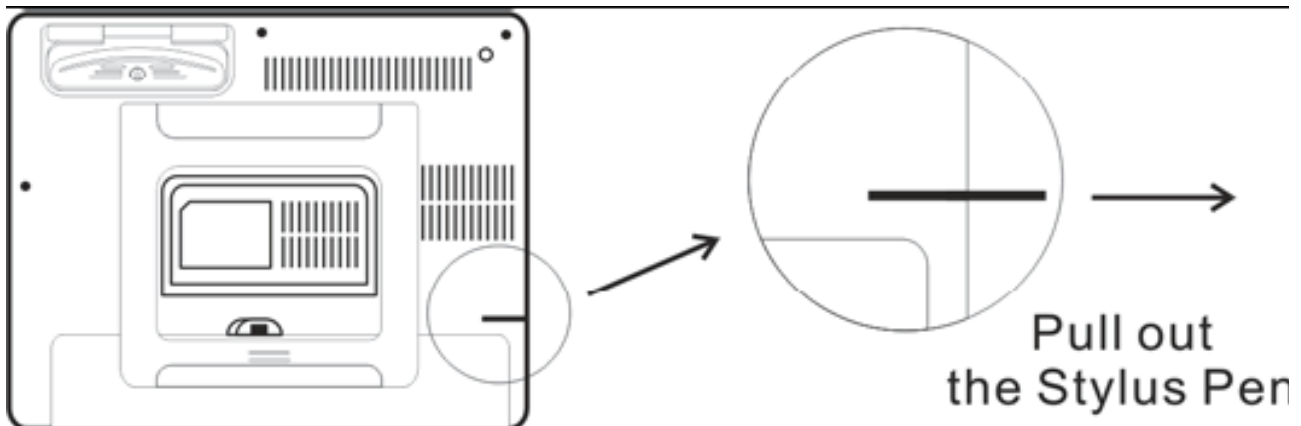
Opening the Back Stand

Place the computer on a flat and stable surface carefully leaning it onto the stand, ensuring that the back stand is securely in place.

Detaching the Back Stand

Fold the stand against the back cover of the computer (refer to figure on the side).

The Stylus Pen



The stylus pen emulates all of the functions of a standard mouse and can be effortlessly used in place of a mouse and a standard keyboard. The stylus pen tucks into a designated holder on the lower left side of the computer.

Performing Mouse Clicks and Other Procedures with the Stylus Pen

To select an item or open a menu on the screen as you usually left click on an external mouse:

- Tap the item or menu with the tip of the stylus pen

To double-click an item on the screen as you normally double click an external mouse:

- Tap the item twice with the tip of the stylus pen. (You need to lift the stylus pen from the screen quickly between taps.)

To select an item as you normally right click on an external mouse:

- Press the tip of the stylus pen on the item and hold it until the pop-up menu appears, then tap the choice.

You can also use the stylus pen to write characters, symbols and draw pictures using additional handwriting software, for example, Windows XP Painter.

The five basic stylus pen operations and their external mouse equivalents can be quickly referenced in the table below:

| STYLES PEN | EXTERNAL MOUSE |
|-------------------|-----------------------|
| Point | Point |
| Tap | Click |
| Double-tap | Double-click |
| Tap and hold | Right-click |
| Drag | Drag |

For Optimal Performance from the Stylus Pen

- ◇ Hold the stylus pen in the same way that you would hold a pen or pencil when writing on paper.
- ◇ Hold the computer securely when mobile and using the stylus pen.
- ◇ Lift and tap the stylus pen quickly between double taps. Avoid using the stylus pen to push the computer buttons.
- ◇ For the most reliable operations, hold the stylus pen and tap vertically, perpendicular to the LCD display.

System Overview

This chapter contains six illustrations, highlighting each external component and its respective functions.

Chapter Preview:

- ◇ Front view of the Computer
- ◇ Right side view of the Computer
- ◇ Left side view of the Computer
- ◇ Top view of the Computer
- ◇ Bottom view of the Computer
- ◇ Rear view and Build In Back Stand



Front View of the Computer



1. 8.4 inch TFT SVGA LCD Display with Touch Screen Control Panel:

Data can be entered the computer module using the stylus pen or a soft/USB/wireless keyboard. A soft keyboard can be located by tapping the keyboard icon in the bottom right on the desktop. Data can also be entered via a USB keyboard plugged into the USB port on the left side of the computer. The computer's USB ports support most USB keyboards and pointing devices.

2. Internal Microphone:

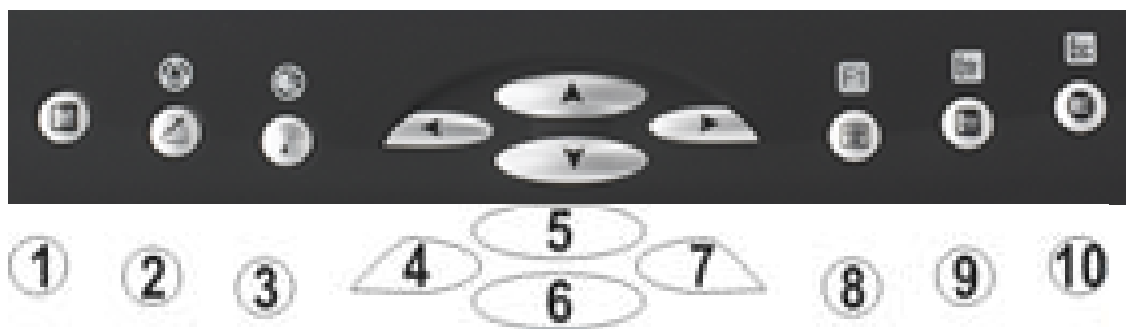
Effortless input of monaural sound recording.

3. Status LEDs:

| LED Indicator | Relevant Component | Description |
|----------------------|---------------------------|--------------------|
| Orange (Flashing) | Hard Drive | Disk Accessing |
| Green (Off) | Battery | Battery Available |
| Green (Solid) | Battery | Battery Charging |
| Blue (Solid) | Power | System Powered On |

Front Panel Button

The above 10 quick access buttons are used for navigating applications in the Microsoft Windows XP environment (or relevant OS) and to setup the System BIOS Utility in DOS mode (alternative function).



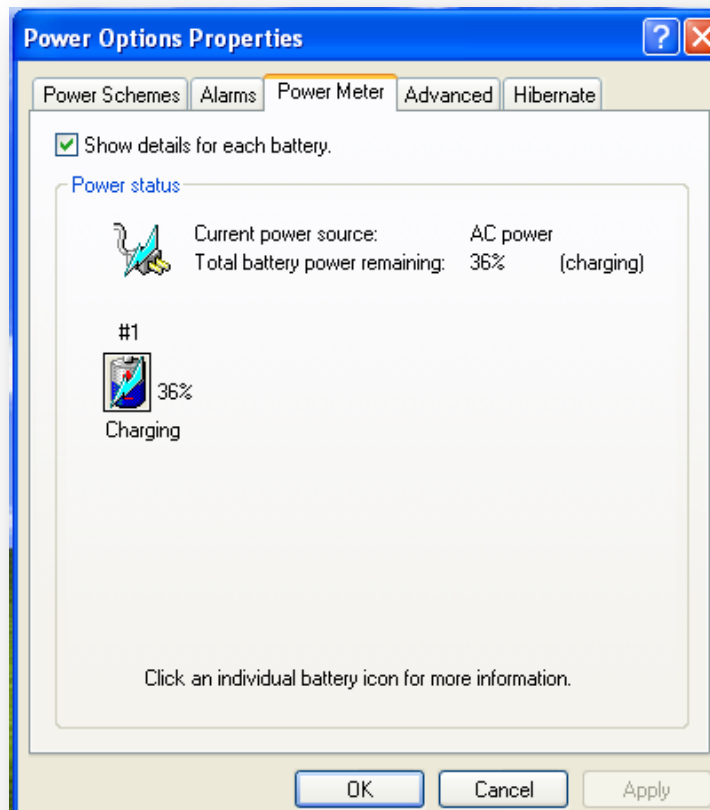
The Quick Reference table below illustrates the Button, its alternative Function, and a brief Function Description while in the System BIOS Utility in DOS Mode

| Button | Keyboard Function | Description in Bios Utility |
|--------|-------------------|-----------------------------|
| 1 | <Delete> | Launch CMOS Setup Utility |
| 2 | <Y> | "Yes" Confirmation |
| 3 | <N> | "No" Confirmation |
| 4 | <←> | Move / Select Item |
| 5 | <↑> | Move / Select Item |
| 6 | <↓> | Move / Select Item |
| 7 | <→> | Move / Select Item |
| 8 | <PgUp>, <PgDn> | Change Value |
| 9 | <Enter> | Selection Confirmation |
| 10 | <Esc> | Exit / Return |

Using the A- Menu

Battery Status

Press on the battery icon to open up the Power Schemes Properties. Select the **Power Meter** tab to show the status of the battery in the image below.



Right Side View of the Computer



PCMCIA Slot: Use only type II PCMCIA cards.

Network Jack (RJ45): Interfaces with an Ethernet 10/100 Base-T network connection.

Modem Jack (RJ11): Supports high speed 56Kbps modems.

Left Side View of the Computer



Power Switch: Powers the computer ON and OFF. Press and hold for 4 seconds to initiate Power OFF.USB 2.0 Ports:

USB 2.0 Ports: Permits hot plugging of USB peripheral devices to the computer. The USB ports support most USB mouse and keyboard devices.

DC-in Jack: Plug the DC (Direct Current) end of the AC Adapter into this jack for external power and battery recharging. Before plugging in the power cord, you must first verify that the external power voltage is appropriate for your geographical area.

Stylus Pen: A stylus pen is used to activate the touch screen display and functions in the same way as an external mouse. The stylus pen is partially visible from the left side of the computer and can be located by pulling it from its secure housing. Only use the tip of the stylus pen when interacting with the LCD display to prevent damage to the display surface.

VGA-Out Port: Connects an external (VGA) display monitor to the computer.

Top View of the Computer



USB 2.0 Port: The additional USB 2.0 port permits hot plugging of USB peripheral devices to the computer.

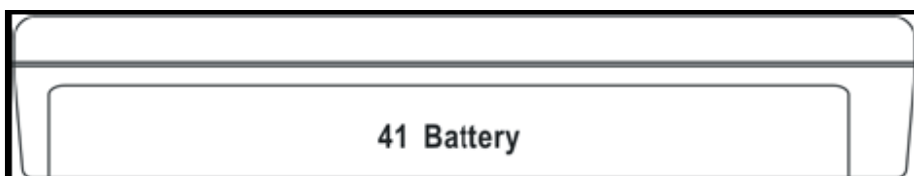
Infra-Red: Enables infra red devices such as, PDAs, cell phones, Tablet PCs and other compatible devices to interact with the computer via infra red.

External Headphone (out) Jack: Connect devices such as headphones or speakers to this jack.

External Microphone Jack: For recording or voice-control functions, an additional microphone plugs in here.

Brightness Tuner: Adjusts the brightness for the LCD display screen.

Bottom View of the Computer



Battery Pack: A 6-cell 4400mAh removable Lithium-Ion battery pack comes standard with the computer. Each cell comes equipped with short circuit, over-charge, over-discharge and over-current protection.

Rear View and Built In Back Stand

Opening the Built in Stand: To use the built in stand to prop up the computer, pull it away from the computer housing.

Detaching the built in Stand: Fold the stand against the back cover of the computer.

Protecting & Maintaining

Chapter Preview:

- ◇ Caring for your Computer
- ◇ Setting The System BIOS Utility
- ◇ Connecting to a Infrared Device
- ◇ Connecting to a Local Area Network
- ◇ Using the Modem
- ◇ Adjusting the Resolutions for the Computer's Display and an External Display



Caring for Your Computer

To guarantee a long life for the computer and to ensure it functions optimally, pay particular attention to the following recommended maintenance guidelines.

Routine Care

Follow these guidelines to keep the computer working properly:

- ◇ Do not attempt to disassemble or modify the computer in any way.
- ◇ Do not place anything on top of the device or its LCD display to prevent damage to the screen.
- ◇ Avoid using and storing the computer in locations where static or electrical interference can damage the internal components.
- ◇ Avoid using and storing the computer in locations exposed to extreme temperature fluctuations, likely condensation, or direct sunlight.
- ◇ Keep the device away from moisture such as exposure to liquids or precipitation.
- ◇ Only operate the device with the battery pack installed, even when using external power. This ensures the computer will have the sufficient power to maintain and save data when disconnected from the external power source.
- ◇ Store the device in its docking station when not in use.

Caring for the Battery

- ◇ Do not heat, tamper or place the battery in water or near a fire.
- ◇ Do not subject the battery to unusual forces such as hitting it, stepping on it or dropping it.
- ◇ Do not attempt to open or service the battery pack.
- ◇ Only replace the battery with the same model or one of compatible design.

Caring for the AC Adapter

- ◇ Be sure to only use the AC adapter that comes provided with this product or a compatible option from the manufacturer. Other adapters may cause damage to the computer and will not be covered under the warranty.
- ◇ Grasp the adapter plug and not the cord, when unplugging the adapter from an electrical outlet.
- ◇ If the power cord becomes damaged (exposed or frayed, etc.), replace with a new AC adapter. Using a damaged cord may cause an electrical shock and may result in fire.
- ◇ Power off and unplug the AC adapter from the computer before unplugging it from the electrical outlet.

Caring for the Touch Screen Display

- ◇ Never spray liquids of any kind directly onto the display screen or allow excess liquid to drip into the device.
- ◇ Never place anything on the display screen that could cause damage to the LCD display, for example, drinks and food.
- ◇ Never scratch the surface of the LCD display with any sharp or damaging objects.
- ◇ Avoid exposing the computer to direct sunlight or excessive ultraviolet radiation for an extended period of time.
- ◇ To clean the exterior of the device, wipe the screen and the housing with a soft, damp cloth moistened with water. Never use soap or other cleaning products on the LCD screen. It may discolour the outer coating and damage screen visibility.

The System BIOS Utility

AWARD BIOS

The computer operates using AWARD Basic Input / Output System (BIOS). Individual explanations are available on the system BIOS screen.

BIOS Setup Utility

The Setup Utility enables you to change the most important system settings, adjusting the system's internal clock and the preferred boot device, etc. Unnecessary changes to the system settings may cause the computer to become unstable or compromise its performance.

Initiating and Navigating the Setup Utility

- ◇ Press **Shift** button on the front panel of the computer or the <Delete> key on an external keyboard during system startup before the OS (Operating System) begins to load.
- ◇ Refer to the Front Panel Button descriptions in Chapter 2 for navigating applications in the System BIOS Utility.
- ◇ Read detail navigating information on the bottom of the display screen for every button and keystroke.
- ◇ Read each field or item descriptions on the right hand side of the display screen.

Connecting an Infrared Device

The infrared port, a small, semi-circular lens located on the front of the computer provides wireless, serial communication between the computer and other infrared devices such as printers or other computers.

1. Using the infrared port

- Make sure the infrared ports of the computer and the other device lie in a straight line. The two ports should be no more than 1 meter apart, with any obstructions in between. Noise from nearby equipment can cause transmission errors.
- Open Wireless Link to check the status of communications in Control Panel.

2. Printing to an infrared printer: Install your printer and assign it to the infrared port. Users can then print from the applications as you would to any other printers.

3. Transferring files through an infrared connection: Users can use the infrared port to transfer files by using wireless link. See the Windows online help for instructions on using Wireless Link.

Connecting to a Local Area Network (LAN)

Users can connect to local area networks (LANs). LANs give users access network resources, such as printers and file servers on the corporate network, and possibly to the Internet.

To connect to a LAN:

1. Check that the existing LAN supports Ethernet 10Base-T (10Mbps) 100 Base-TX (100Mbps) connections.
2. Plug the LAN cable (not supplied) into the built-in Network Jack (LAN Port). The cable must have an RJ-45 connector.
3. Windows automatically detects and sets up a LAN connection. To edit settings, open Network and Dial-up Connections in Control Panel.

See Windows Help for information about setting up and using LAN connections. Contact the network administrator for network information.



Using the Modem

Users can connect the computer to a telephone line and communicate throughout the world. Users can explore the Internet, send and receive e-mail messages, and use the computer to send and receive faxes.



For best performance, users can connect to any Internet Service Provider (ISP) or modem network that has V.90 or V.92 interoperable modems.

Note: The built-in modem may not work with multiple phone lines or a private branch exchange (PBX), cannot be connected to a coin-operated telephone, and does not work with party lines. Some of these

connections may result in excess electrical voltage and could cause a malfunction in the internal modem. Check the telephone line type prior to connecting the phone line.

1. Special restrictions in certain countries

- Many countries impose a blackout period after a modem repeatedly fails to connect to a service provider. The number of failed attempts and the period users must wait before trying again differ from country to country.
- When using a modem, an external surge protector can prevent the computer damage by lightning or other electrical surges. Connect any approved surge protector to the modem cable whenever users are using the modem.

2. To change the modem setting: The modem is already set up to be compatible with telephone systems and modems in most area. However, in some situations, users may have to change modem settings to match local conditions.

Control Panel: Open Phone and Modem Options in Control Panel to change many modem settings. On the modem tab, select Properties to set connection speeds, or on the Dialling Rules tab, select Edit to set dialling options.

- **Communications Software:** Many communications applications provide options for controlling modem settings. See the help for the used software.
- **T Commands:** User can control many aspects of modem operation using modem AT commands. Open Phone and Modem Options in Control Panel. On the modem tab, select Properties. Users can type AT commands on the Advanced tab in the space for Extra settings.

3. Important Safety Information: When using the computer with a telephone connection, always follow basic safety precautions to reduce the risk of fire, electric shock, and injury to persons.

- Avoid using a telephone connection (other than a cordless type) during an electrical storm. There may be a remote risk of electric shock from lightning.
- Disconnect the modem cable before opening the computer case or touching an un-insulated modem cable, jack, or internal component.
- Do not plug a modem cable or telephone cable into the Network Jack (LAN Port).

Adjusting the Computer's and External Displays' Resolution

Changing the Video Resolution of the Computer

1. Choose one of the two options to open the Display Properties dialog box:
 - 1.1. Click the right button of the mouse on the desktop and select Properties from the menu. or,
 - 1.2. Click the Start button and select Control Panel. Double click the Display icon.
2. Select the Settings tab. Select the Advanced option.
3. Select the Adapter option. Select the List All Modes.
4. Confirm the desired display mode (ex. 800x600/ True Colour (32 bits)/ 60Hertz).

Changing the Video Resolution of an External Display

1. Plug the VGA cord into the VGA output port. Plug the other end of the cord into the external CRT Display or Projector.
2. Use one of the following two options to open Monitor Properties in the dialog box:
 - 2.1 Click the right button of the mouse on the desktop and select Properties from the menu. or,
 - 2.2. Click the Start button and select Control Panel. Double click the Display icon.
3. Select Settings. Select S3Display.
4. Configure the Display Device and apply the new settings to the external display.
 - 4.1. Set the Display Device to CRT disabling the LCD.
 - 4.2. Select Apply to confirm the new settings.
5. Select a new video resolution (ex. 1024 x 768) for the external CRT.

Note: Correct operation will disable the LCD and enable the external display.

Specifications & Software

Chapter Preview:

- ◇ Specifications and Standard Features
- ◇ Software



Specifications and Standard Features

Processor: VIA C7-M Processor (1/1.2-GHz, Ultra Low Power Consumption, Ultra Low Heat)

Chipset: South Bridge VIA VT8237R+ and North Bridge VIA VN800

Operating System: Microsoft® Windows® XP Home Edition
Option: Microsoft® Windows® XP Professional Edition

System BIOS: AWARD BIOS

Memory: 512-MB DDR II DRAM 200 pin (533-MHz)
Options: 1-GB

Display: 8.4-inch TFT SVGA (800x600 / 262k colours / RGB 16-bits) LCD Touch Panel Screen

Graphics: The integrated UMA 64-MB AGP 8X LVDS 2D/3D graphics, and the External VGA/Monitor port supports up to 1600 x 1200 resolution, depending on the external monitor's capability, resolution and colour depth settings.

Pointing Device: Touch Panel Screen and Stylus Pen Input Device

Storage: 2.5" 40-GB compatible with ATA-33/66/100/133
Options: 2.5" 60/80/100-GB compatible with ATA-33/66/100/133

Communication:

- ◇ 10/100Mbps Base-T Ethernet LAN
- ◇ High speed 56Kbps V.92 Fax/Modem MDC module

Wireless Connectivity:

- ◇ **Wireless LAN :** IEEE 802.11g OFDM with a Wi-Fi® compliant internal antenna, operates at data rates up to 54Mbps and transmits power up to 15dBm.
- ◇ **Bluetooth :** Class 2 integrated Bluetooth® module with internal antenna, compliant with Bluetooth® specifications version 1.2

CMOS Camera

- ◇ 1.3M Pixels CMOS Camera Module
- ◇ Support Auto Reverse Function

GPS (optional)

- ◇ Support 20-channel GPS

Multimedia

- ◇ Internal microphone and dual speakers (AC-97 Audio On-board Sound, 16Bit Stereo, Full Duplex)
- ◇ External volume controls via hot key setting
- ◇ Firmware MPEG-2 decoder

Battery: 6-cell (Manufacturer: Sanyo / Model: 18650) 4400mAh Removable Lithium-Ion Battery Pack (Manufacturer: Sawtry / Model: TPC). Short circuit, over-charge, over-discharge, over-current and abuses protected.

Power Supply: External AC Adapter (Manufacturer: Sunny / Model:SYS1318-6016 / 175g / AC Input 100~240V, 50/60Hz, 2 Pin Inlet 8-Shape / DC Output 16V, 3.75A, 5.5x2.5x10 S Type) includes Power Cord (Manufacturer: Lee Yuen / Model:1.277M Black H03VH2-F 2*0.75mm2 with LY-21 and LY-22).

Included Accessories: Stylus pen (1Pack); VGA connection cord, power cord, panel cloth, smart case (optional) and adapter pouch.

System Recovery: Original settings restored via HDD Systems Recovery Partition

Interfaces:

| | |
|----------------------------------|------------------------------|
| RJ45 Port | Ethernet LAN |
| RJ11 Port | 56Kbps V.92 Fax/Modem |
| PCMCIA Slot | Type II with 32 bit Card Bus |
| 3x USB 2.0 Ports | Series A Connectors |
| FIR IrDA (infra-red) Port SIR, | 115.2Kbps |
| External Microphone In Port | 2.5mm Receptacle |
| External Headphone/Line-out Port | 2.5mm Receptacle |
| Extension Port | VGA/Monitor |
| DC Power In | 2.5mm Centre Pin |
| LED Status Indicators : | |
| HDD LED (Orange) | Flashing – Disk Accessing |
| Battery LED (Green) | Off – Battery Available |
| | Solid – Battery Charging |
| Power LED (Blue) | Solid – System Powered On |

Software Adobe Reader:

- ◇ The Bluetooth Utility, BlueSoleil™
- ◇ The Smart Panel for Screen Rotation and Audio Recording
- ◇ The Front Panel Hot Key Utility
- ◇ **Options:** Handwriting Recognition, Pensoft Pro Software Notes, MyMemo

Mobility Weight: 1.0 kg (without battery)

Dimensions: 231mm x 192mm x 42mm

Warranty: ONE year limited warranty parts.

Environmental Specifications:

- ◇ Operating temperature : 0° to 35°C (32° to 95°F)
- ◇ Storage temperature : -20° to 75°C (-4° to 167°F)

Certification of System: FCC / CE / TUV

Software

Adobe Reader

A free trial version of Adobe Reader is pre-installed in the computer. The Adobe Reader icon will appear in the Start Menu / All Programs tray. Users can order a more comprehensive version or get more information from the Adobe website: <http://www.adobe.com/>.

Using the Bluetooth Utility: BlueSoleil TM

BlueSoleil allows the computer to wirelessly access a variety of Bluetooth enabled digital devices, such as cameras, mobile phones, headsets, printers, and GPS receivers. Users can also create networks and exchange data with other Bluetooth enabled computers or PDAs.

When launching BlueSoleil from the desktop, six menus will appear:

- ◇ File Menu
- ◇ View Menu
- ◇ My Bluetooth Menu
- ◇ My Services Menu
- ◇ Tools Menu
- ◇ Help Menu

File Menu

| | |
|---------------|---|
| Hide | Hide the BlueSoleil Window. Connections are still maintained. |
| Always on Top | Keeps the BlueSoleil Window on top. |
| Exit | Exit BlueSoleil. |

View Menu

| | |
|-----------------|--|
| Main Window | Show the BlueSoleil Main Window. |
| Service Window | Show the BlueSoleil Service Window. |
| Arrange Devices | Arrange remote devices by Device Name, Address or Type. |
| Refresh Devices | Refresh the list of remote devices detected by BlueSoleil. |
| | Note: If you select Refresh Devices, the list of previously detected devices will not be cleared. To initiate a new device search and clear the list, press F5. |

My Bluetooth Menu

| | |
|-----------------------------|---|
| Bluetooth Device Discovery | Search for other Bluetooth enabled devices within range. |
| Bluetooth Service Discovery | Browse for relevant services of the selected remote device. |
| Security | Configure security settings for the local device. |
| Device Properties | Configure properties for the local device. |

My Services Menu

| | |
|---------------|---|
| Start Service | Begin the selected local Bluetooth service. |
| Stop Service | End the selected local Bluetooth service. |
| Status | View the status of the selected local Bluetooth service. |
| Properties | Configure the properties for the local Bluetooth service. |

Tools Menu

My Bluetooth Shortcuts
Find Device

Select a shortcut to connect or delete.
Search for a device by Device Name and Address and click Find. The specified device will appear highlighted in the Main Window.

Add New Device
Add Device from History

Add a remote device by entering the Bluetooth device address.
Add a remote device from the history list. Delete the selected device from the history.

Configurations

Quick Connect

Assign a remote device to automatically connect with a Bluetooth serial port whenever an application opens a specified port. Remove a device from the selected port.

Unplug HID

Remove Human Interface Devices from BlueSoleil.
Note: For the connected HID, BlueSoleil will reconnect in the instance of connection loss, except however, the unplugged HID.

My Bluetooth Device

Recommended for advanced users only.

Help Menu

Contents and Index F1
About BlueSoleil

Access BlueSoleil Help Online.
Information about your computer's version of BlueSoleil.

Enable Bluetooth Devices

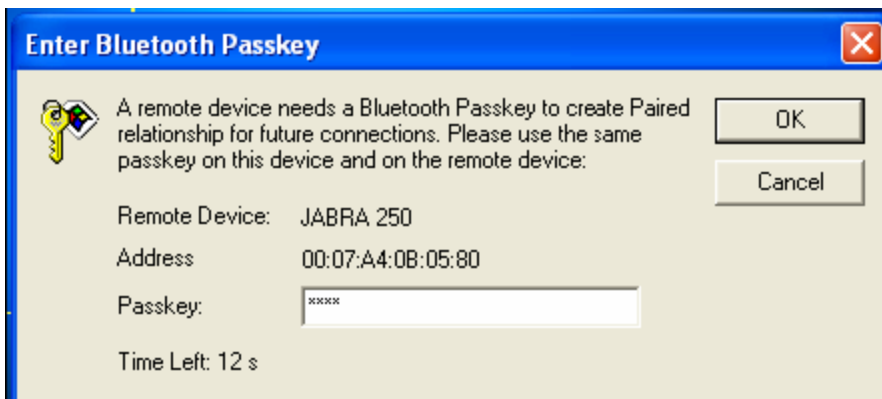
Step 1: Press the Bluetooth Setting Button of the Device.

Step 2: Select **"My Bluetooth"** and scroll down to Bluetooth Device **"Discovery"** to find out all of your available Bluetooth devices.

Step 3: BlueSoliel will display all available devices on the screen.

Right-click the corresponding remote device icon and select **"Pair Device"** from the menu. Make sure the Bluetooth Setting Button of the Device is active, if not, retry.

Step 4: Type the Passkey and click **OK** to confirm.



After the Bluetooth device has been successfully configured with the computer, the remote device icon will display a red checkmark.

Step 5: Double-click the remote device icon and select Connect and then Bluetooth Human Interface Device Service from the menu. Be sure the Bluetooth Setting Button on the Device is active, if not, retry.

Step 6: BlueSoliel will display the link between local and remote devices indicating that the connection was successful.

Hot keys Applications

The Quadpad 1 Hot Key utility enables the users to easily launch popular applications and utilities such as virtual keyboard, wifi on/of switch and screen resolution changes. Use the images below to identify each button's default setting.

Using the Front Panel Hot Key Utility

Select the shift hotkey on the front of the unit to launch the window below. There are 3 layers in total. Each time the shift hot key is applied, the layer will change. Each level function will be set to the user requirement, though the images will remain the same.

The hot key utility enables the user to create a shortcut for selecting the most required/used application. The images below shows the 3 level function of the Hot Key

Below is the image of the first level function when the hot key function is selected.



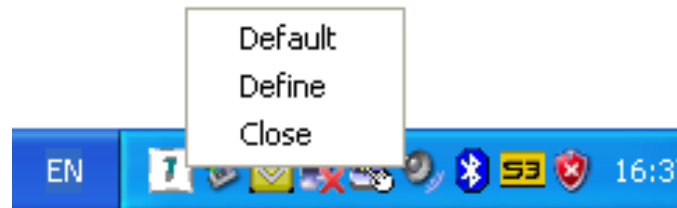
To change the secondary level function press the "Shift" button the panel will appear as show below



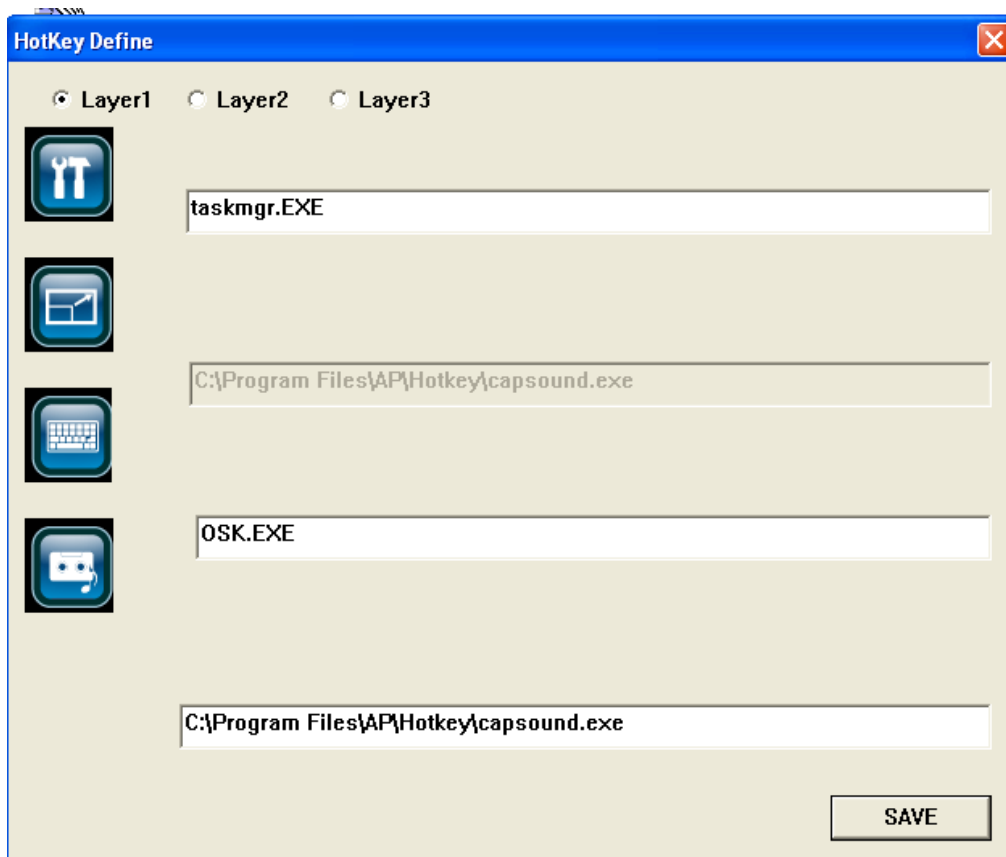
To change the third level function press the "Shift" button the panel will appear as show below



Users can define each quick access button by invoking the Key Define Utility. You can access this by performing the right click action on the hotkey icon in the task bar and selecting "define". The quick launch icon appears in the Windows systems tray, in the lower-right corner of the Windows desktop, as show in the image below. The icon also shows which layer the hot key application is currently in (1, 2 or 3).



The image below appears when selected on "Define". To change the application, select the icon you wish to change and select the .exe application for the required hot key. Once the changes are done to the user's requirement, click on the "save" button.



Launch a Program via Primary, Secondary and Third Panels

Tap the icon twice to launch the program.

1. Primary Level Function



Switches to secondary level functions



Windows Task Manager



Changes the Screen resolution



Scrolls from right to left



Scrolls up and down



On Screen keyboard



Input <Enter>



Record Audio (Start / Stop)

2. Secondary Level Function



Switches to third level functions



Handwriting Recognition



Disables / Enables Speakers



Re-do and undo the last function



Scrolls up and down



Function Key <F1>



Input <Enter>



Escape <Esc>

3. Third Level Function



Switches back to Primary level functions



Windows Media Player



Wireless LAN Utility



Side Arrow clocks and unlocks the screen



Scrolls up and down



Note Pad



Input <Enter>



Note Pad

Using Handwriting Recognition: Pensoft Pro

Select Start Menu ->All Programs -> Pensoft Pro -> Handwriting Recognition to launch the program. The following will appear:




Toolbar



Configures the system



Displays  and changes to Handwriting Recognition Mode



Returns to the main toolbar and changes to English Words Mode



Toggles between mouse and pen function.

User could use F11 to quickly toggle between Handwriting/Mouse mode.



Displays all of the options available to the user.



The system will put the words which are close to the handwriting to the selected words area after each recognition. Users can tag the selected word to correct the recognition.



System Configuration (Main Menu / Options)

- Recognition Tab** Configures alphabet, numbers, and symbols.
- Pen Tab** Configures pen width, shape, gradient, colour, etc.
- Writing Tab** Configures writing style and ink frame size.
- Hot Key Tab** Configures hot key settings for mouse / pen mode.

Keyboard Applications

EyesBoard Keyboard

The EyesBoard keyboard is an on-screen keyboard / virtual keyboard application. It allows the user to use the stylus pen or finger to type directly on the screen. It behaves like a physical keyboard to optimize user recognition and improve usability.



The image below shows the Keypads been resized to accommodate for stylus and/or finger input.



Troubleshooting

Audio

1. Click the speaker icon on the Microsoft Windows system tray to open the Taskbar Volume control to verify that the Microsoft Windows volume is properly set and is not muted. Also double-click the same speaker icon open the Master volume control to verify that the Wave device is not muted and is set to a proper level.
2. Connect external speakers or headphones to the audio connectors on the system to verify audio.

Bluetooth

1. Check Microsoft Windows Device Manager to verify that the Bluetooth device is being seen by the operating system.
2. Verify that both Bluetooth profiles match one another. The Bluetooth devices have to share the same profile to communicate. Consult the Bluetooth device manual to find the profile required for the communication.
3. Verify that the Bluetooth devices are switched on.
4. Verify that both Bluetooth devices are paired. For security reasons, both Bluetooth devices need to be paired before they can transfer data. Encrypted data can be sent through the Bluetooth connection after the devices are paired. Once the paired Bluetooth network is encrypted, only Bluetooth devices that have authorization will be able to communicate with one another. Consult the Bluetooth device manual to find the appropriate pairing information.

Ethernet Networking

1. Check Microsoft Windows Device Manager to verify that the network adapter is installed.
2. Verify that TCP/IP (or other appropriate protocol) is properly installed as the following steps:
 - ✓ Check Control Panel and double-click the Network Connections icon to display all networks. The network card should be present as a Local Area Connection.
 - ✓ Right-click the appropriate Local Area Connection and select Properties. In the Properties window, make sure that the Internet Protocol (TCP/IP) is installed.
 - ✓ If TCP/IP is not installed, click Install, click Protocol, and then click TCP/IP.
 - ✓ Once installed make sure that Obtain an IP address automatically, and Obtain DNS server address automatically are checked (if using DHCP). To verify this, highlight the TCP/IP protocol, and select Properties.

Note: Only use a Static IP Address if the network/Service Provider requires one.

3. Verify the TCP/IP address.
 - ✓ Click Start, select Programs, select Accessories, and then click Command Prompt.
 - ✓ Type the command, ipconfig. The system will list the IP address for the local machine.
 - ✓ If this returns a 169.x.x.x or 0.0.0.0 address, then type the following commands, ipconfig /release and then ipconfig /renew. You should then receive a TCP/IP address appropriate to the network, along with a Default Gateway address.
 - ✓ Try to communicate with it by typing this command ping x.x.x.x where x.x.x.x is the IP address of the Default Gateway.

4. Ping the loopback address.

- ✓ Click Start, select Programs, select Accessories, and then click Command Prompt.
- ✓ Type the command, ping 127.0.0.1. This will send a message to the internal network stack on the machine. You should see a response like this:

Pinging 127.0.0.1 with 32 bytes of data:

```
Reply from 127.0.0.1: bytes=32 time<1ms TTL=128
Reply from 127.0.0.1: bytes=32 time<1ms TTL=128
Reply from 127.0.0.1: bytes=32 time<1ms TTL=128
Reply from 127.0.0.1: bytes=32 time<1ms TTL=128
```

Ping statistics for 127.0.0.1:

Packets: Sent = 4, Received = 4, Lost = 0 {0% loss},

Approximate round trip times in milli-seconds:

Minimum = 0ms, Maximum = 0ms, Average = 0ms

5. Install the latest Service Packs for Operating System or Network Client, if necessary. It may be necessary to install Service Packs for either the operating system or for any additional network clients that may be installed. Contact the software vendor for these updates which are usually free downloads.

Hard Disk Drive

1. Check that the HDD is recognized in BIOS, and is properly set up in the startup sequence for the system.
2. Reseat the drive.
3. Use FDISK to verify the drive is partitioned and active.

Intermittent, Lock-ups or Hangs

1. Remove and reseal all hardware (power supply, battery, cables, adapters, etc.).
 - ✓ Disconnect the AC adapter.
 - ✓ Remove the battery pack.
 - ✓ Remove any other external hardware.
2. For testing purposes, to remove hardware and associated drivers that are not required for normal system operation.
3. Swap the suspect device with an identical, known good, device, if available.
4. Remove all surge protectors, cable extensions, switch boxes, etc. and use direct connections to power and phone lines.
5. Apply critical Microsoft Windows updates and patches.
6. Scan all the files on the system with anti-virus software using the vendor's latest virus definitions.
7. Scan the system for spyware using the anti-spyware software's latest definitions.
8. Record all error messages, including memory addresses, reported when the problem occurs.
9. Ensure the machine meets the hardware and operating system requirements of all installed software and hardware.

Modem

1. Verify that the modem line is connected to a RJ-11 phone jack but not to a RJ-45 network port.
2. Verify that the modem line is connected directly to a wall outlet. Eliminate any devices like a Telephone, answering machine, surge protector, or line splitter. Test with another phone cable and a different wall outlet, if available.
3. Verify the presence of a strong dial tone on the same telephone line that modem is attempting to dial out on by connecting a telephone handset.

Note: A no dial tone error message may be due to the software not handling a certain dial tone rather than a specific hardware fault. Around the world there is a variance in the signal quality of the dial tone which causes a report of no dial tone detection. Disable the dial tone detection to correct no dial tone detected by modem error.
4. Verify that the latest driver has been installed properly.
5. Verify that no other software that accesses COM ports is running when the operating system loads (for example: fax software, synchronizing software for handheld devices, communication software, or external pointing devices that require a COM port).
6. Verify that the internal modem is enabled properly in the system.
7. Verify that the default resources are set for the Digital Signal Processor (DSP) and the modem.
8. Verify that the default settings are the same in Microsoft Windows Device Manager.

Power

No power at all

1. Verify the power status indicator.
2. Check all power connections, and remove any power strips and surge protectors to connect the AC adapter directly to the AC power outlet.
3. Inspect the AC adapter. Check for any physical damage, and ensure the power cable is firmly attached to the adapter brick and the system.
4. Verify the AC power source is working by attaching another device to the outlet.
5. Remove the system from any docking station or port replicator.
6. Remove all devices and then test for system power with minimal devices attached.
 - ✓ Disconnect the AC adapter.
 - ✓ Remove the battery pack.
 - ✓ Remove any externally or internally installed options and other devices.
 - ✓ Wait for 30 seconds before reconnecting the devices and power sources.

System does not run on battery power

1. Verify the power and battery status indicator.
2. Remove and reseal the battery to make sure it is properly connected.
3. Swap batteries with another similar system, if available. If another similar system is available, then verify that the battery pack works in the other system and that the other system battery pack works in this system.

Power Management

1. Adjust the power management settings according to user's preferences and environment.
2. Disable any screen savers in the operating system.
3. Disable any terminate and stay resident (TSR) applications.
4. Scan all the files on the system with the anti-virus software using the vendor's latest virus definitions.
5. Scan the system for spyware using the anti-spyware software's latest definitions.
6. Verify the driver and firmware versions are the latest for attached hardware. This can be verified at the manufacturer's Web site, if available.
7. Remove any attached hardware and device drivers. For testing purposes, temporarily disconnect any devices one at a time. Ensure all attached hardware is Advanced Power Management (APM) or Advanced Configuration and Power Interface (ACPI) compliant. This can be verified in the hardware device User's Guide from the manufacturer.
8. Load the original or an earlier configuration.
9. Load the original configuration in the BIOS.

Projectors

The projector does not display an image

1. Enable the external monitor (VGA-Out) port on the computer
2. "Waking up" the projector - Some projectors have power-saving states similar to a computer's sleep-mode. Consult the projector's documentation if you need to "wake up" the projector.

The projector image is cut off

Usually this problem occurs when the computer's display properties are set to a resolution that the projector does not support. Similar to the LCD display, the projector has an optimal resolution with which it works best. Consult the projector's documentation to find the optimal resolution and set the computer's display properties accordingly.

The computer screen turns off

The computer probably has a built-in feature that turns off the screen after a period of inactivity to conserve the battery power. Disable the power-saving feature that turns off the screen

Resetting the projector

Resetting the projector will fix most other problems.

- ✓ Unplug the projector from the computer.
- ✓ After ten seconds, plug the projector back in.
- ✓ Set the display resolution, maximum of 1024x768, on the computer to the projector's optimal resolution.

USB

Some USB devices are not APM/ACPI friendly and may not operate properly after resuming from Standby or Hibernation. Test the attached USB device after performing each step.

1. Verify that a USB port and an operating system with USB support are being used to attach a USB interface external device to the system.
2. Verify that USB is enabled in BIOS.
3. Verify that the USB device and any required drivers were installed in accordance with the manufacturer's instructions. This may require removing the USB device and the drivers, and then reinstalling the USB device and the latest drivers.
4. Verify the USB device works on another machine, if available.
5. Verify another USB device, if available, works on this machine.
6. Verify that the USB device is USB 1.1 or 2.0 compliant. Plugging specific USB 1.1 compliant devices into a USB 2.0 compliant port will cause that the device should function normally, but at a slower speed than if a 2.0 device is attached to 2.0 port. Most USB 1.1 devices will function normally in USB 2.0 ports.
7. Verify that external power is attached if required. Some USB 2.0 devices will require additional power from external sources or an additional USB port to function correctly in USB 1.1 compliant computers.

Video Display

No video display on the LCD

1. Verify the system is powered on.
2. Ensure the system is not in the suspend mode.
3. Disconnect any external displays.
4. Power down the system. If the system is attached to a docking station or port replicator, then remove the system.
5. Verify that the display works on startup.
6. Contact a local Support Center if there is still no video display on the LCD.

Unsatisfactory video display on the LCD display

1. Verify that the display panel is cleaned to prevent distortions.
2. Check display settings for resolution (screen area) and colour depth.
3. Check the brightness setting.
4. A small number of missing, discoloured, or lit all the time dots or pixels is characteristic of thin-film transistor (TFT) liquid crystal display (LCD) technology due to manufacturing process for such technology irrespective of manufacturer. If your LCD has defective pixels, it should not be considered faulty until the number of defective pixels meets or exceeds the number listed in the Pixel policy criteria.

External monitors issues

1. Verify the cabling and connections between the external CRT display and the VGA-Out port.
2. Ensure the external display is setup and configured according to the instructions provided by the manufacturer.
3. Verify the external display passes any applicable self tests according to the instructions provided by the manufacturer.
4. Verify the display settings are supported by the system video chipset and the external display.
5. Verify the external display works on another system if available.

Viruses, Worms, and Spyware

Viruses, worms, trojan horses and spyware are malicious software (malware) that are covertly loaded onto the computer through infected e-mail, bogus software, from an infected Web site, or simply by connecting to a network that has an infected machine on it. This malicious code can:

- ◇ steal information behind the scenes (like the credit card number, passwords, personal files on the hard disk drive, or e-mail addresses in the address book)
- ◇ load files onto the hard disk drive (including offensive content, or spam messages)
- ◇ corrupt or delete personal files or programs on the hard disk drive
- ◇ slow the computer's performance
- ◇ e-mail itself to people in the address book

Internet worms can by themselves search, find, and infect unprotected computers that are logged on the Internet within a half-hour. All computers have ports that are used to communicate with their own peripherals and with the outside world. Hackers can seize control and attack these well-known ports. Like a backdoor, these ports must be secured and locked with firewall software to keep out intruders, and to protect the system from attack.

Symptoms of infection

- ◇ The system becomes slow, unstable, and crashes
- ◇ The browser displays pop-up advertisements while starting the computer, or when the system has been idle
- ◇ The browser's home page unexpectedly changes
- ◇ Web pages are unexpectedly added to the Favourites folder
- ◇ New toolbars are unexpectedly added to the Web browser
- ◇ You cannot start a program
- ◇ When you click a link in a program, the link does not work
- ◇ The browser suddenly closes or stops responding
- ◇ It takes a much longer time to start or to resume the computer
- ◇ Components of Windows or other programs no longer work

Wireless Networking

1. Check Microsoft Windows Device Manager to verify that the network adapter is installed.
2. Verify that the radio is enabled. It is possible to disable the transmitter of the wireless card without Device Manager showing any problems. Most wireless cards will put an icon in the system tray. Right click this icon and it may have a menu option to enable/turn on the wireless radio.
3. Check for association to an Access Point. If you double-click the previously mentioned system tray icon, the configuration utility of the wireless card will appear. This utility will be able to show the status of the wireless card, showing what channel the card is using and what signal strength is being received. It may be difficult to maintain a connection if signal strength is low due to either interference or distance. For example, interference can be caused by 2.4GHz cordless phones, other Access Points in the area, and physical structures such as load bearing walls or metal partitions.
4. Check the SSID (the wireless network name) and security settings.
5. Verify the hardware compatibility with the Access Point. Often, vendors of Access Points will add features to improve their product. Unfortunately, these extra features are not always compatible with all hardware. Consult the product documentation for the Access Point about the possible need to disable these features.
6. Verify that TCP/IP (or other appropriate protocol) is properly installed as the following steps:
 - ✓ Check Control Panel and double-click the Network Connections icon to display all networks. The wireless card should be present as a Local Area Connection.
 - ✓ Right-click the appropriate Local Area Connection and select Properties. In the Properties window, make sure that the Internet Protocol (TCP/IP) is installed.
 - ✓ If TCP/IP is not installed, click Install, click Protocol, and then click TCP/IP.
 - ✓ Once installed make sure that Obtain an IP address automatically, and Obtain DNS server address automatically are checked (if using DHCP). To verify this, highlight the TCP/IP protocol, and select properties. **Note:** Only use a Static IP Address if the network/Service Provider requires one.
7. Verify the TCP/IP address.
 - ✓ Click Start, select Programs, select Accessories, and then click Command Prompt.
 - ✓ Type the command, ipconfig. This will list the IP address for the local machine.
 - ✓ If this returns a 169.x.x.x or 0.0.0.0 address, then type the following commands, ipconfig /release and then ipconfig /renew. You should then receive a TCP/IP address appropriate to the network, along with a Default Gateway address.
 - ✓ Try to communicate with it by typing this command ping x.x.x.x where x.x.x.x is the IP address of the Default Gateway.

8. Ping the loopback address.

- ✓ Click Start, select Programs, select Accessories, and then click Command Prompt.
- ✓ Type the command, ping 127.0.0.1. This will send a message to the internal network stack on the machine. You should see a response like this:

```
Pinging 127.0.0.1 with 32 bytes of data:  
Reply from 127.0.0.1: bytes=32 time<1ms TTL=128  
Reply from 127.0.0.1: bytes=32 time<1ms TTL=128  
Reply from 127.0.0.1: bytes=32 time<1ms TTL=128  
Reply from 127.0.0.1: bytes=32 time<1ms TTL=128  
Ping statistics for 127.0.0.1:  
    Packets: Sent = 4, Received = 4, Lost = 0 {0% loss},  
    Approximate round trip times in milli-seconds:  
        Minimum = 0ms, Maximum = 0ms, Average = 0ms
```

9. Install the latest Service Packs for Operating System or Network Client, if necessary. It may be necessary to install Service Packs for either the operating system or for any additional network clients that may be installed. Contact the software vendor for these updates which are usually free downloads.